

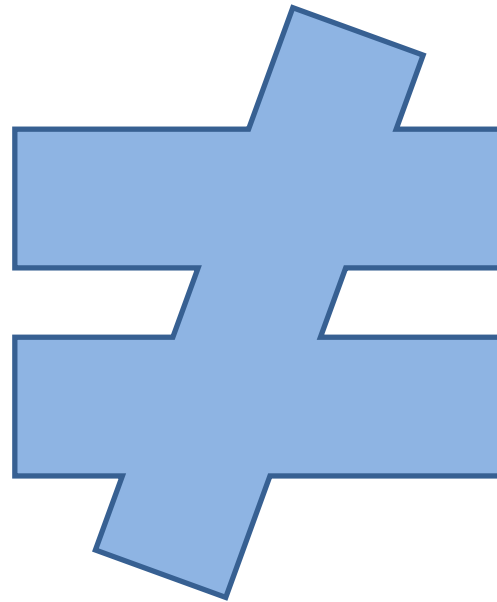
# **Adherence to treatment guidelines and survival in women with early-stage breast cancer aged 70 years or more in Denmark 2008-2012**

Marianne Vogsen, MD, PhD-student

Department of Oncology

Odense University Hospital

# Disclosures



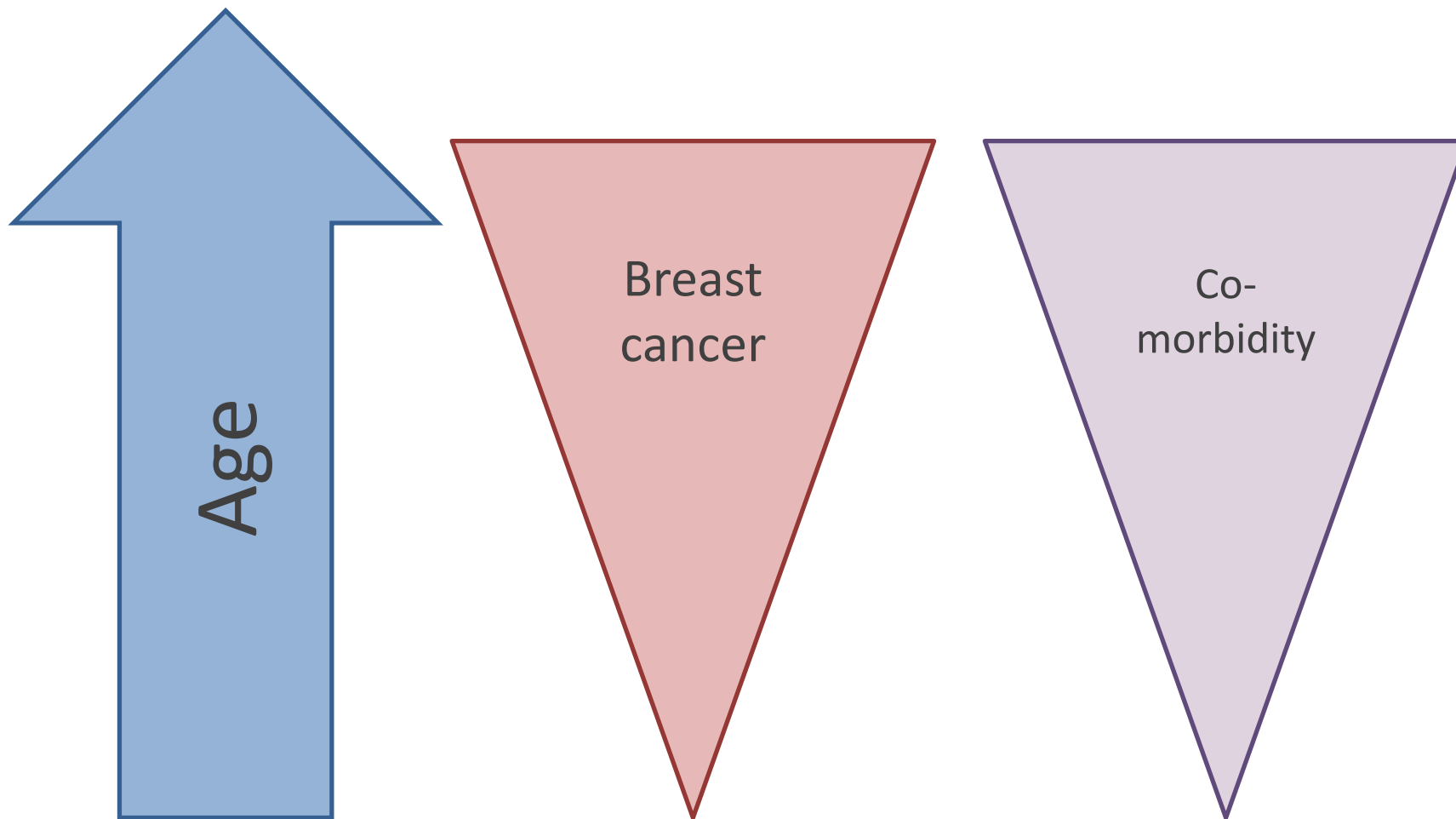
# Survival after breast cancer

Patient characteristics

Treatment

Disease related factors

Ewertz M et al. *Acta oncologica* 2016



Land LH et al. *Breast cancer research and treatment* 2012  
Land LH et al. *Critical reviews in oncology/hematology* 2012

Guidelines for  
adjuvant  
breast cancer  
treatment



Evidence from  
randomised  
clinical trials  
including patients:

- younger than  
70 years
- free from  
comorbidity

Peto R et al. *Lancet* 2012

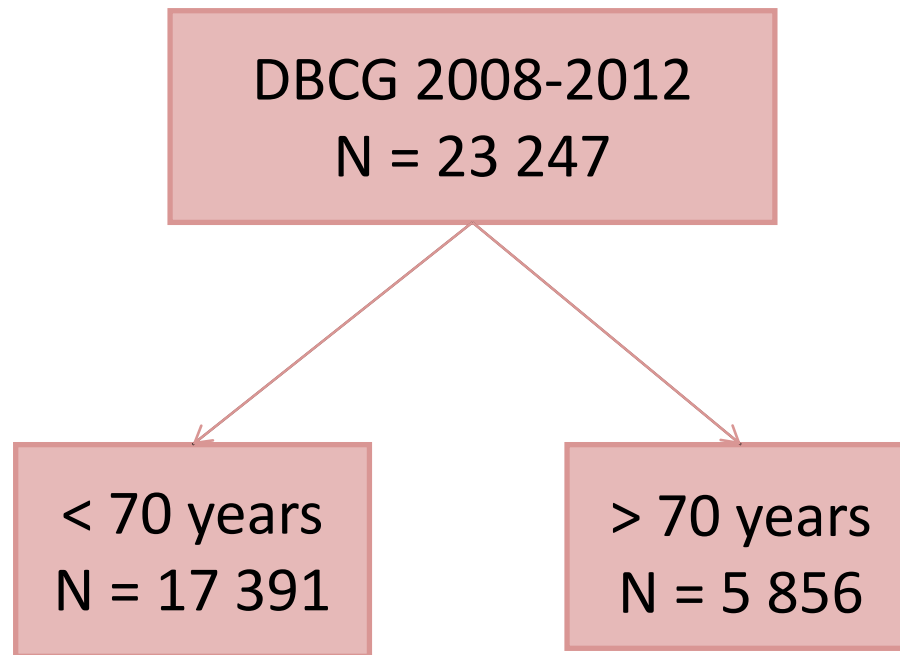
Did Danish women with early-stage breast cancer aged 70 years or more receive treatment according to the Danish guidelines between 2008-2012

What were the reasons for deviating from guidelines?

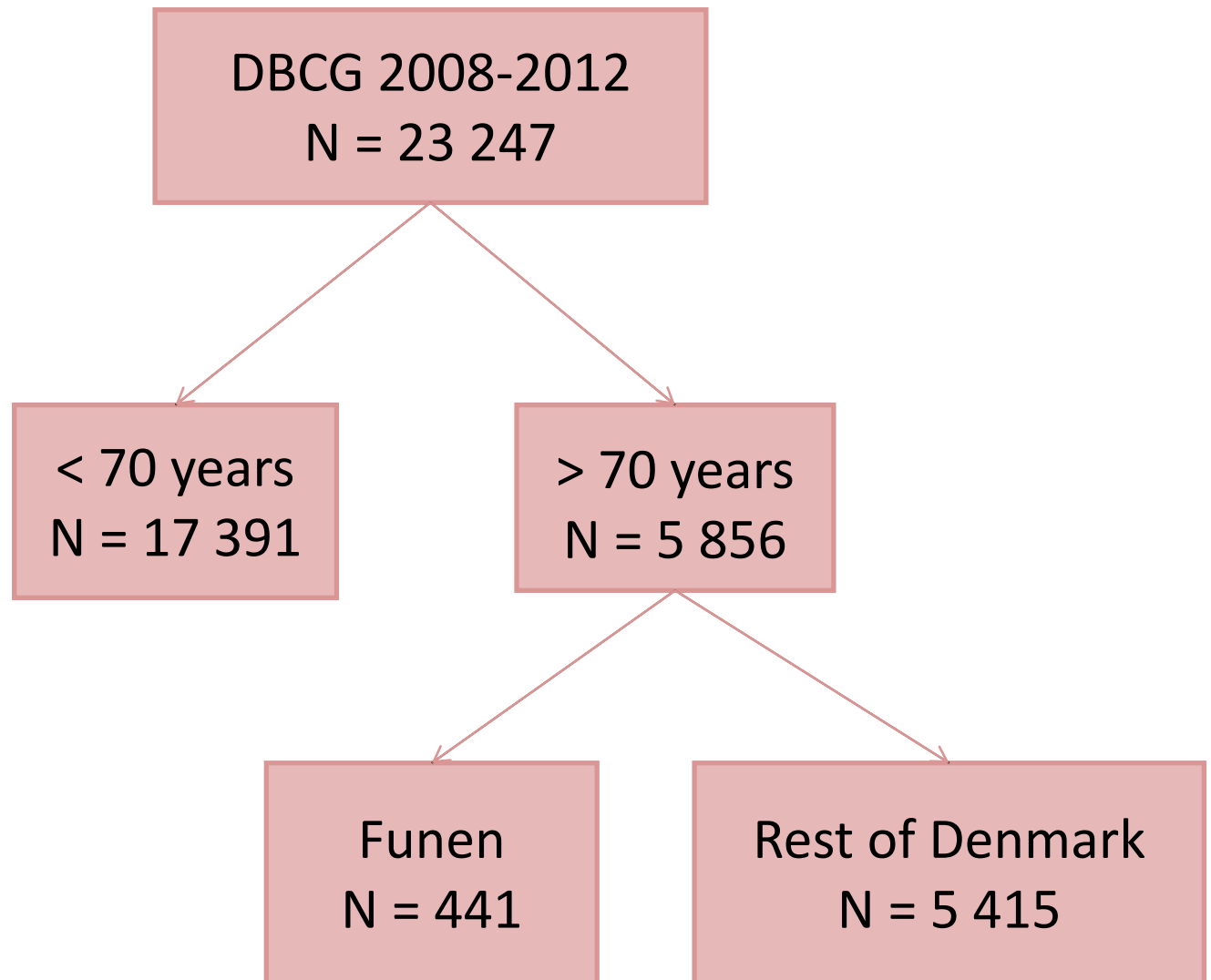
Did such deviations affect survival?

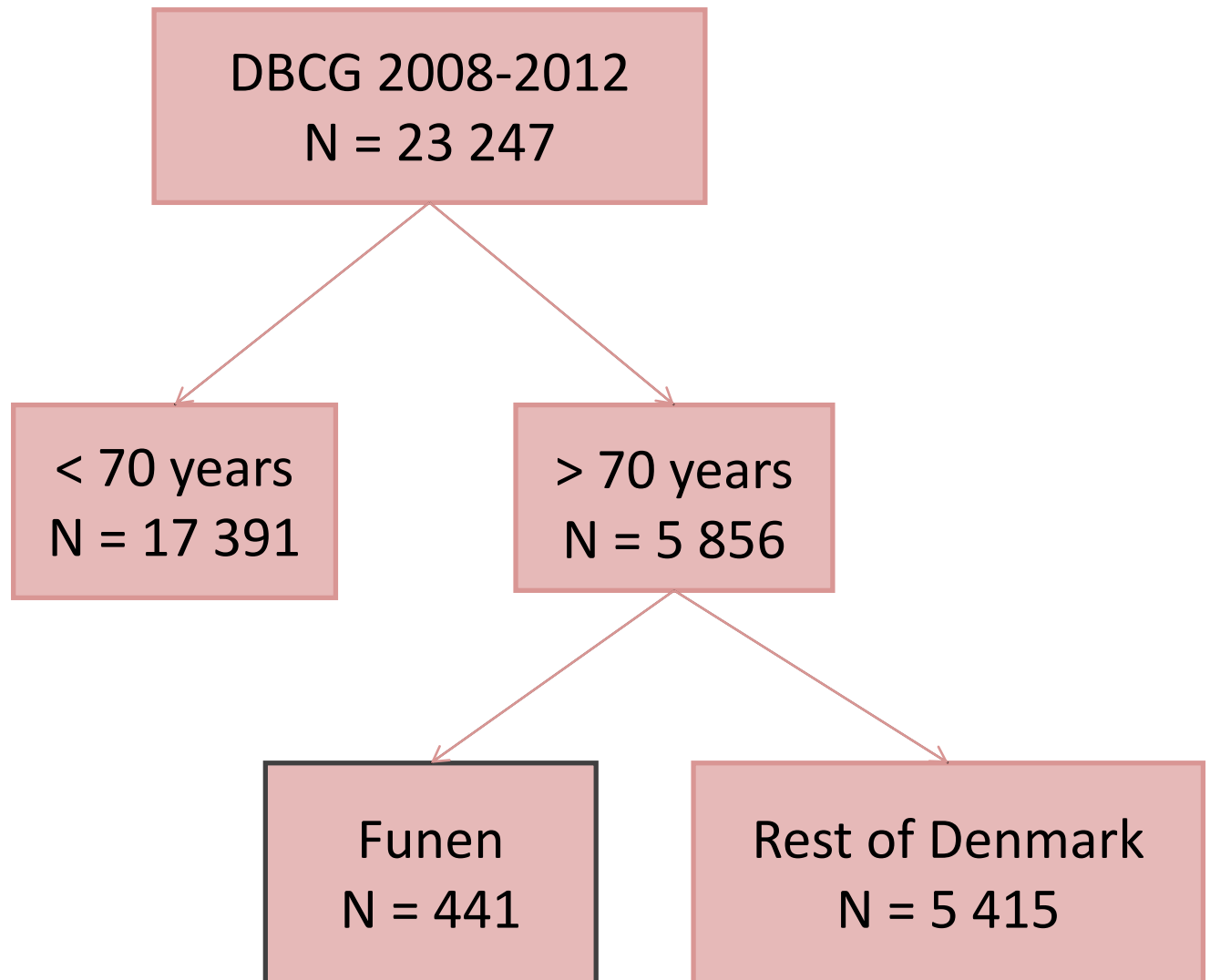


DBCG 2008-2012  
N = 23 247

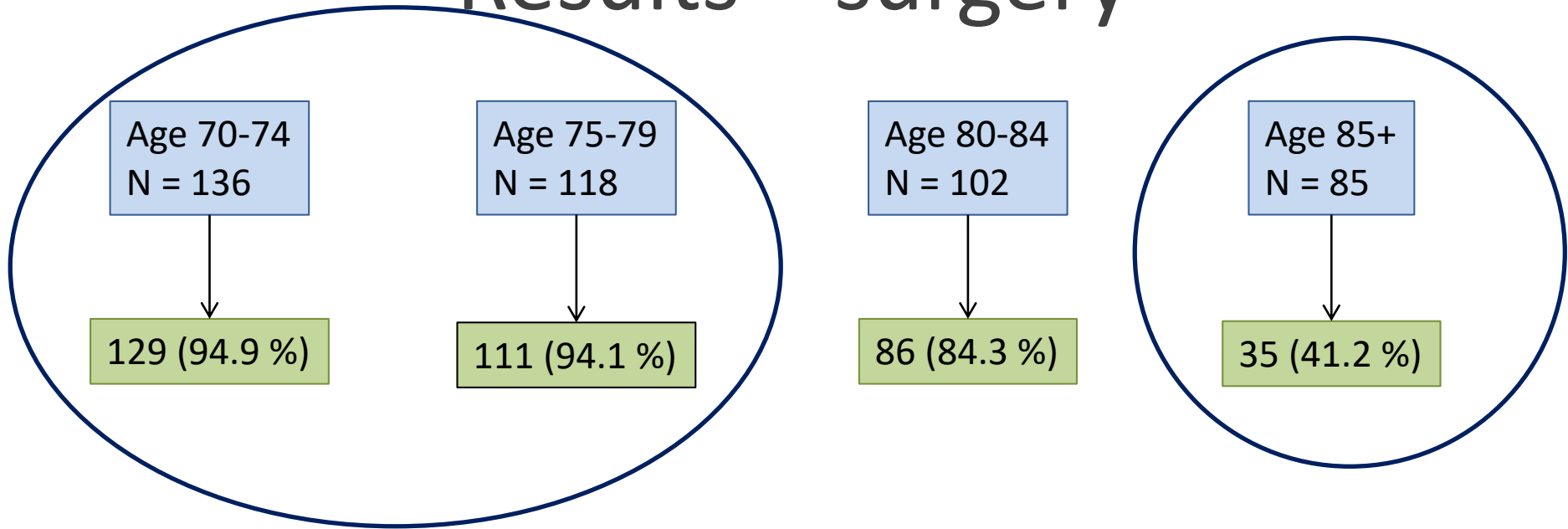






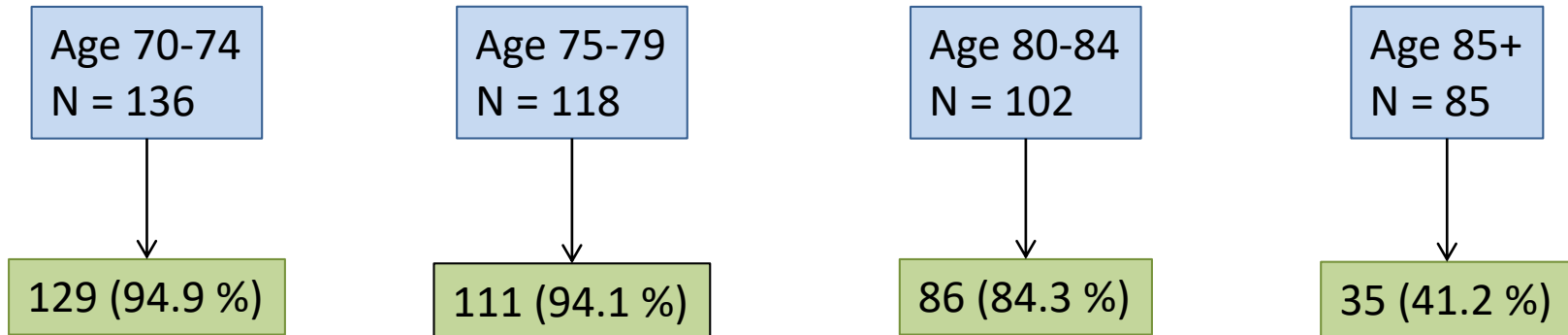


# Results – surgery



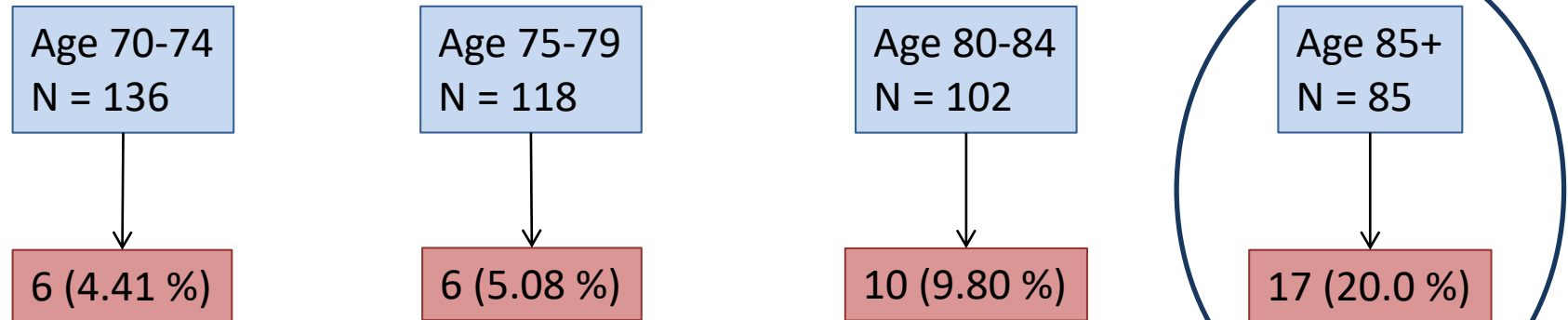
Guideline treatment

# Results – surgery



Guideline treatment

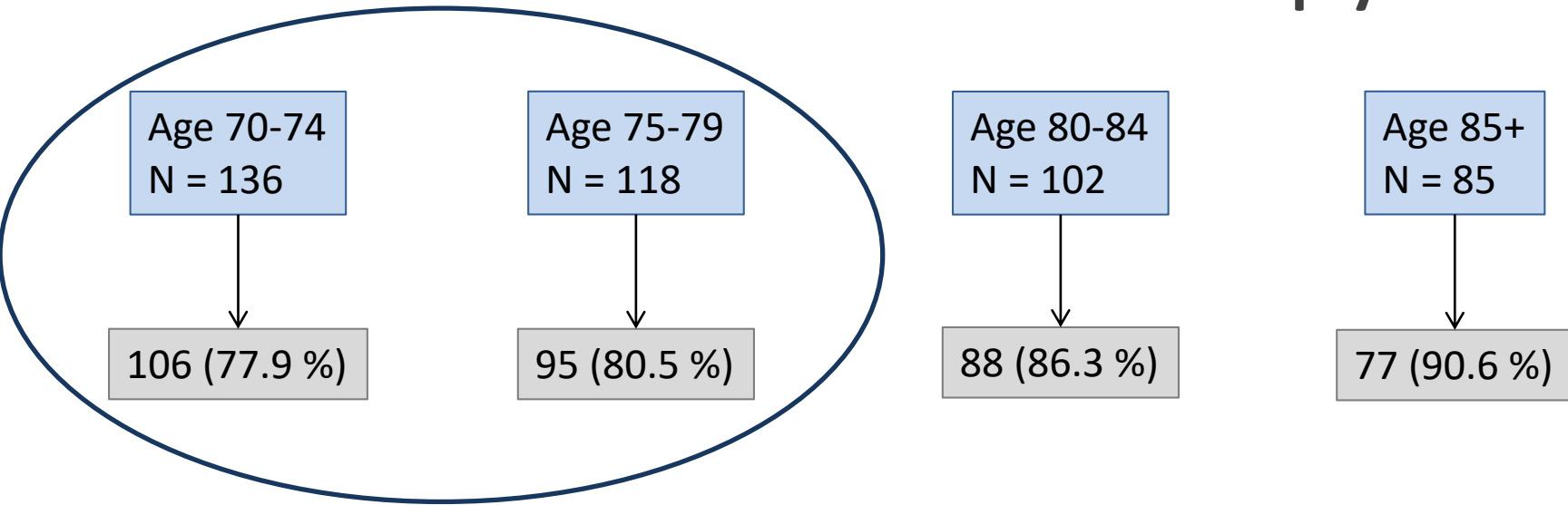
# Results – endocrine therapy



Age +  
Patients' request

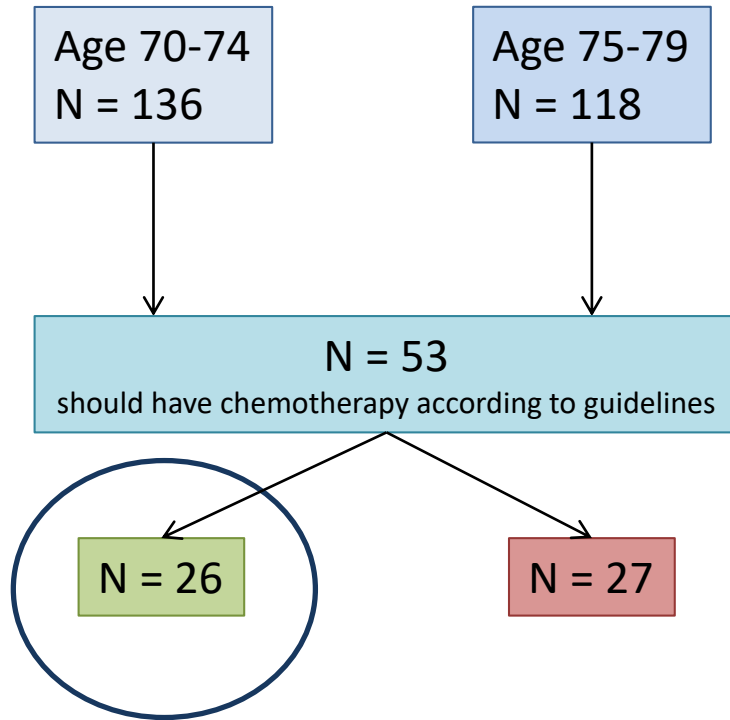
Not guideline treatment

# Results – chemotherapy



Not indicated

# Results – chemotherapy



Guideline treatment

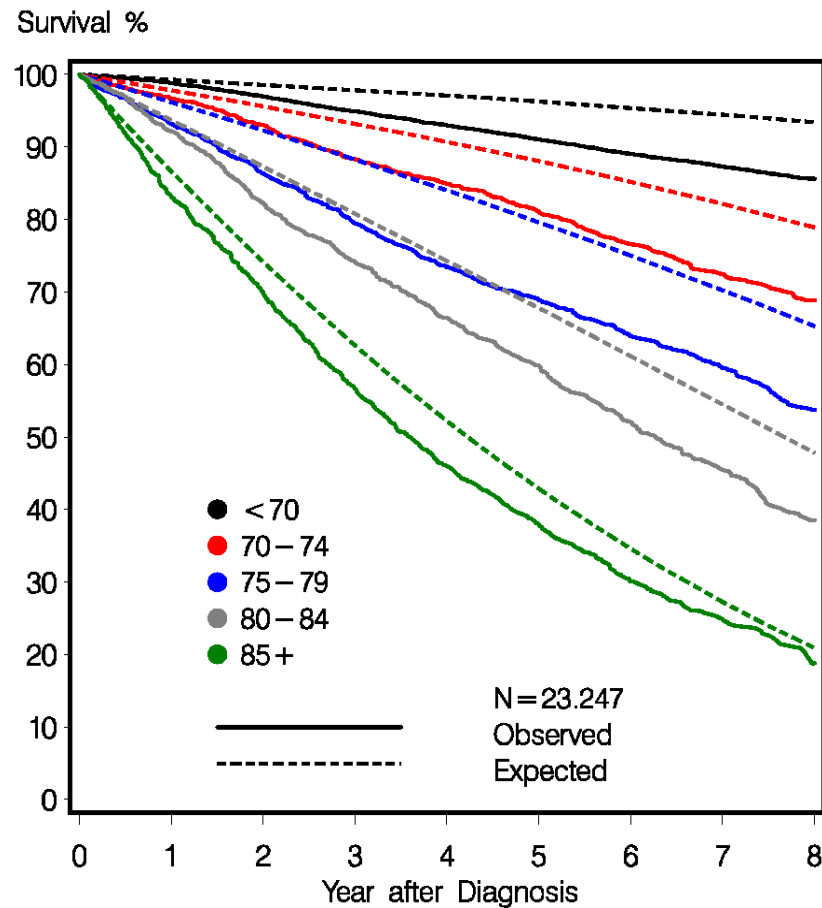
Indicated

Not guideline treatment

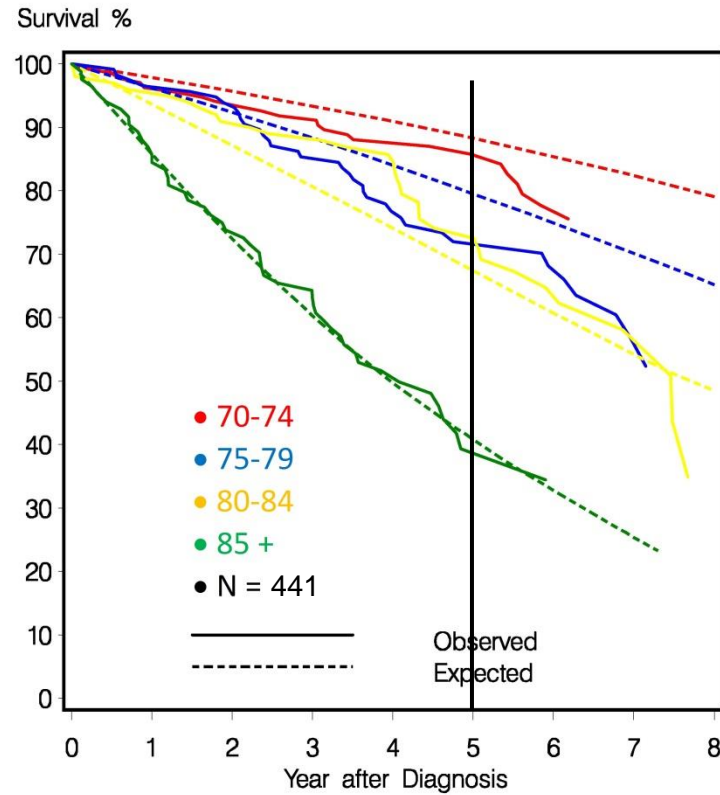




# Results – survival all



# Results – survival Funen



# Surgery according to guidelines vs. no surgery

		HR	95% CI	P-value
SURGERY	No < 80 years	8.38	4.46;15.8	0.003
	No ≥ 80 years	2.56	1.63;4.01	

Surgery is important for survival for patients between 70-80 years

# Take home

- Adherence to treatment guidelines decreases with increasing age
- The reasons was patients' request, age and comorbidity.
- Our results emphasize the importance of surgery for survival for elderly breast cancer patients between 70-80 years.



# Thank you for your attention

Marianne Vogsen

MD, PhD-student, Department of Oncology, Odense University Hospital

Camilla Bille

PhD, Department of Plastic Surgery, Odense University Hospital

Anne Marie Bak Jylling

MD, Department of Pathology, Odense University Hospital

Maj-Britt Jensen

Statistician, Danish Breast Cancer Cooperative Group, Secretariat, Copenhagen University Hospital

Marianne Ewertz

Professor, Department of Oncology, Odense University Hospital **–on behalf of the Academy for Geriatric Cancer Research (AgeCare)**